



THE NEXT GENERATION OF LONG PRODUCTS

> OVERVIEW BROCHURE

STRUCTURAL AND RAIL DIVISION

ENGINEERED BAR PRODUCTS DIVISION

ROANOKE BAR DIVISION

STEEL OF WEST VIRGINIA DIVISION

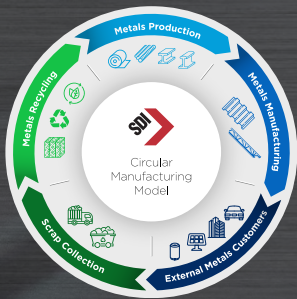
VULCAN STEEL PRODUCTS

SDI LAFARGA COPPERWORKS

FORGING THE FUTURE OF STEELMAKING

With our approximately 4.6 million tons of long product steel capacity, Steel Dynamics Long Products Group produces a wide range of differentiated products at our four steel mills. Our Long Products Group produces structural steel beams and shapes, rail, engineered special-bar-quality steel, cold finished steel, merchant bar products, rebar, and specialty steel sections.

SUSTAINABILITY



Intentionally Sustainable. At Steel Dynamics, we take pride in our intentionally sustainable approach. Our commitment to all aspects of sustainability is embedded in our founding principles—valuing our teams, our partners, our communities, and our environment. Our steelmaking operations have exclusively used electric arc furnace (EAF) technology with recycled ferrous scrap as the primary input to limit our carbon emissions while simultaneously delivering quality products to our customers and driving returns for our shareholders. Additionally, our companywide performance-based incentive programs encourage our teams to create innovative solutions to increase efficiencies, reduce raw material usage, reuse secondary materials, and promote material conservation and recycling.

100% EAF TECHNOLOGY

Our steelmaking operations use electric arc furnace (EAF) technology with recycled ferrous scrap as the primary input, which limits our greenhouse gas emissions. This more sustainable technology lowers our environmental impact by using electrical energy to heat charged material rather than traditional blast furnaces, which require coal to generate heat. Electric arc furnaces are also easier to turn on and off, leading to more efficient energy usage. The scrap used to make our steel is 100% melted and manufactured in the United States. Based on the composition of the scrap used, EAF technology allows us to closely control the output quality of our steel.



RESEARCH & DEVELOPMENT

Our state-of-the-art Research & Development (R&D) Center, housed at the Structural and Rail Division in Columbia City, IN, serves the entire SDI organization. Our advanced capabilities include:

- Sawing and CNC Machining
- Metallographic Grinding, Polishing, and Etching
- Optical Microscopy
- Scanning Electron Microscopy
- Hardness Testing
- Tensile Testing
- Fatigue Testing
- Rolling Contact Testing
- Fracture Toughness Testing
- Jominy Testing
- Thermomechanical Simulation
- Induction Melting
- Electrical Discharge Machining (EDM)
- Stereoscopy and Failure Analysis

BIOEDGE™/EDGE™



BIOEDGE is redefining what's possible in sustainable steel. Our boldest step yet in sustainable steelmaking, BIOEDGE is formulated utilizing renewable or nuclear energy certificates and renewable biocarbon, delivering meaningful reductions in Scope 1 and 2 greenhouse gas (GHG) emissions. By leveraging our use of electric arc furnace (EAF) technology, our circular manufacturing model, cutting-edge innovation, and biocarbon production using sustainably sourced raw materials, we're empowering companies to decarbonize their supply chains while maintaining uncompromised quality and performance. Bringing advanced, verifiable GHG-emissions-reduction solutions to industries worldwide, BIOEDGE is the next frontier in lower-embodied-carbon steel products.

PRODUCT RANGE



PARALLEL FLANGE

Beams are widely manufactured and easily erected, making them the preferred choice for a range of applications. H-beams, or wide-flange beams, have an ideal strength-to-weight ratio for supports in bridges, platforms, mezzanines, and residential buildings. I-beams have high tensile strength, making them excellent for bearing loads under direct pressure in projects such as bridges and steel-framed buildings.



ENGINEERED BAR

Special bar quality (SBQ) is specialized bar for end uses that require unique characteristics, such as engineered chemistries or mandated hardness. SBQ, also known as "specialty bar," is typically high-strength carbon or alloy steel custom-engineered to meet specific customer design criteria.



COLD FINISHED

Cold finished products serve an array of industries, including automotive, agriculture, oil and gas, and heavy equipment. SDI is one of the largest producers in the industry, offering rounds, flats, squares, hex, keyway, and more. Grades offered include 1018, 1045, 1144 A311-B, 1215, 8620, 12L14, and 4140 annealed.



RAIL ▲

Using advanced hot rolling technologies, we produce rails with superb dimensional consistency and surface finish. Our rotary-straightened rails achieve 320' lengths for superior end straightness. We can deliver continuous welded rail (CWR) up to 1,650' in length with as many as 79% fewer welds compared to traditional 80' welding operations, enhancing track safety and performance while reducing track maintenance and extending rail life.

The only North American long rail manufacturer offering hot rolled finished rails in lengths up to 320', Steel Dynamics is qualified to supply rail to all North American Class I railroads. Our steelmaking operations include electromagnetic stirring and dynamic soft reduction, enabling superior segregation management and overall rail cleanliness. Hot rolled steel rail products meet the diverse needs of the rail market, including 30#, 40#, 60#, 85# ASCE rails; d-bars; 84# and 74# conductor rail/third rail; joint/splice bars; various sizes of flat bars; U69 (UIC33/33C1) guard bars; and a range of mine ties. We also offer cut-to-length and punching services for all rail products.

MERCHANT ▶

Structural Merchant—Our structural merchant beams are versatile building components used to strengthen walls in a variety of applications and markets. These beams are particularly valuable in construction due to their shape, which makes them less likely to tear apart. They are common in light commercial construction, joist manufacturing, building construction, civil engineering, and tractor-trailer manufacturing.

MBQ—Produced from hot rolled, cold rolled, galvanized, or cold drawn steel, merchant bar quality (MBQ) is a class of long, semi-finished steel products, including rounds, angles, channels, and flats, that receive no additional processing after production. Additionally, the chemical ranges in the products stay within industry standards. Steel fabricators use our MBQ in structural and construction applications while original equipment manufacturers use them to produce utility trailers, agricultural equipment, material-handling equipment, specialized transportation, and manufacturing equipment.

Specialty—Custom-engineered to serve a broad spectrum of customers, our specialty-shaped merchant steel is ideal for heavy construction equipment, industrial truck masts and hanger bars, and guardrail posts. We produce a variety of carbon steel specialty shapes, a line of standard merchant shapes, light structural steel shapes, and truck-trailer beams.



SEMI-FINISHED ▲

Our steel billets are produced via an electric arc furnace (EAF) melting process and a ladle metallurgy furnace (LMF) refining process. They are then solidified using continuous casting technology and torch-cut to the desired length.

Special bar quality (SBQ) practices, such as vacuum tank degassing (VTD), electromagnetic stirring (EMS) in the mold, and fully shrouded transfer of liquid steel from the ladle to the tundish and from the tundish to mold, are available at our mill in Columbia City, IN.

Enhanced merchant quality practices, such as shrouding from the ladle to the tundish and argon shrouding from the tundish to the mold, are available at our mill in Roanoke, VA.



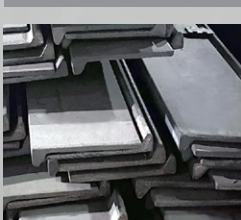
BAR PRODUCTS ▼



Rebar—Rebar (short for reinforcing bar), known when massed as reinforcing steel or reinforcement steel, is a steel bar used as a tension device in reinforced concrete and reinforced masonry structures to strengthen and aid the concrete under tension. Concrete is strong under compression but has weak tensile strength. Carbon steel rebar significantly increases the tensile strength of the structure. Rebar's surface is often "deformed" with ribs, lugs, or indentations to promote a better bond with the concrete and reduce the risk of slippage.



Threaded Rod—Designed to withstand extreme levels of pressure and tension, threaded rods are fasteners that achieve their purpose with threading that causes a tightening action from rotational movement. The rod's threading allows other fixings, such as bolts and nuts, to easily screw or fasten to it. Threaded rods have many applications, serving as pins to fasten or connect two materials. Also used to stabilize structures, they can be inserted into various materials, such as concrete, wood, or metal, to either temporarily create a stable base during construction or be installed permanently.



Specialty—Our specialty-shape steel is custom-engineered to meet a wide range of customers' needs. It's typically used in heavy construction equipment, industrial truck masts and hanger bars, and guardrail posts, and is available in various carbon-steel specialty shapes, a line of standard merchant shapes, light structural steel shapes, and truck-trailer beams.



Lateral Resistance Systems—The most common bracing methods for resisting lateral forces in commercial buildings include moment frames, shear walls, and braced frames. These are vertical elements that transfer lateral loads, including wind, seismic forces, and stability forces, through floor or roof diaphragms to the building's foundation. They help keep a structure from overturning or collapsing.

END MARKETS

Our long steel products are used in numerous industry sectors, including the construction, automotive, infrastructure, heavy equipment, manufacturing, transportation, agriculture, energy, and pipe & tube markets.



STRUCTURAL AND RAIL DIVISION



COLUMBIA CITY, IN

LOCATION OVERVIEW

Our Structural and Rail Division produces a variety of parallel flange beams, H-piling, and channel sections, as well as flat bars and large unequal leg angles, and reinforcing bars, including custom cut-to-length, smooth bar, and coiled. We also produce standard-strength carbon, intermediate alloy hardness, and premium-grade rails in 40' to 320' lengths for the railroad industry.

END MARKETS



CONSTRUCTION



TRANSPORTATION



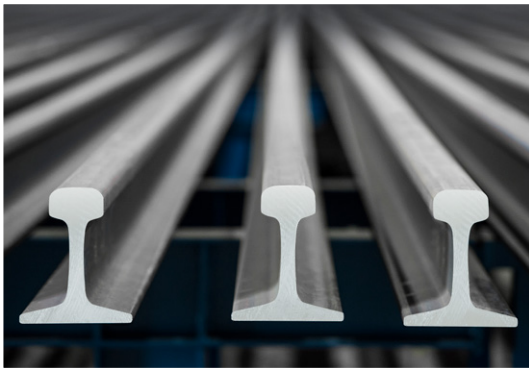
ENERGY



INFRASTRUCTURE



DISTRIBUTION



Our premium rail has been certified by all Class I railroads. Additionally, our rail-welding facility has the ability to weld (Continuous Welded Rail) in lengths up to 1,650', which offers customers savings in terms of initial capital cost and reduced maintenance.

PRODUCTS

PARALLEL FLANGE BEAMS

H-PILING

CHANNEL SECTIONS

FLAT BARS

LARGE EQUAL AND UNEQUAL LEG ANGLES

REBAR (CUSTOM CUT-TO-LENGTH,
SMOOTH BAR, AND COILED)

INTERMEDIATE ALLOY HARDNESS
AND PREMIUM-GRADE RAILS
(40' - 320' LENGTHS)

CERTIFIED BY ALL CLASS I
RAILROADS

ABILITY TO WELD (CONTINUOUS
WELDED RAIL) IN LENGTHS UP
TO 1,650'



ROANOKE BAR **DIVISION**

ROANOKE, VA

LOCATION OVERVIEW

Our Roanoke Bar Division produces merchant products, including channels, angles, flats, merchant rounds, and reinforcing steel bar. Excess steel billet production is sold to those mills without sufficient melting capacities, including our Steel of West Virginia facility. Our steel fabrication operations also purchase angles from our Roanoke Bar Division.

END MARKETS



MERCHANT PRODUCTS



TRANSPORTATION



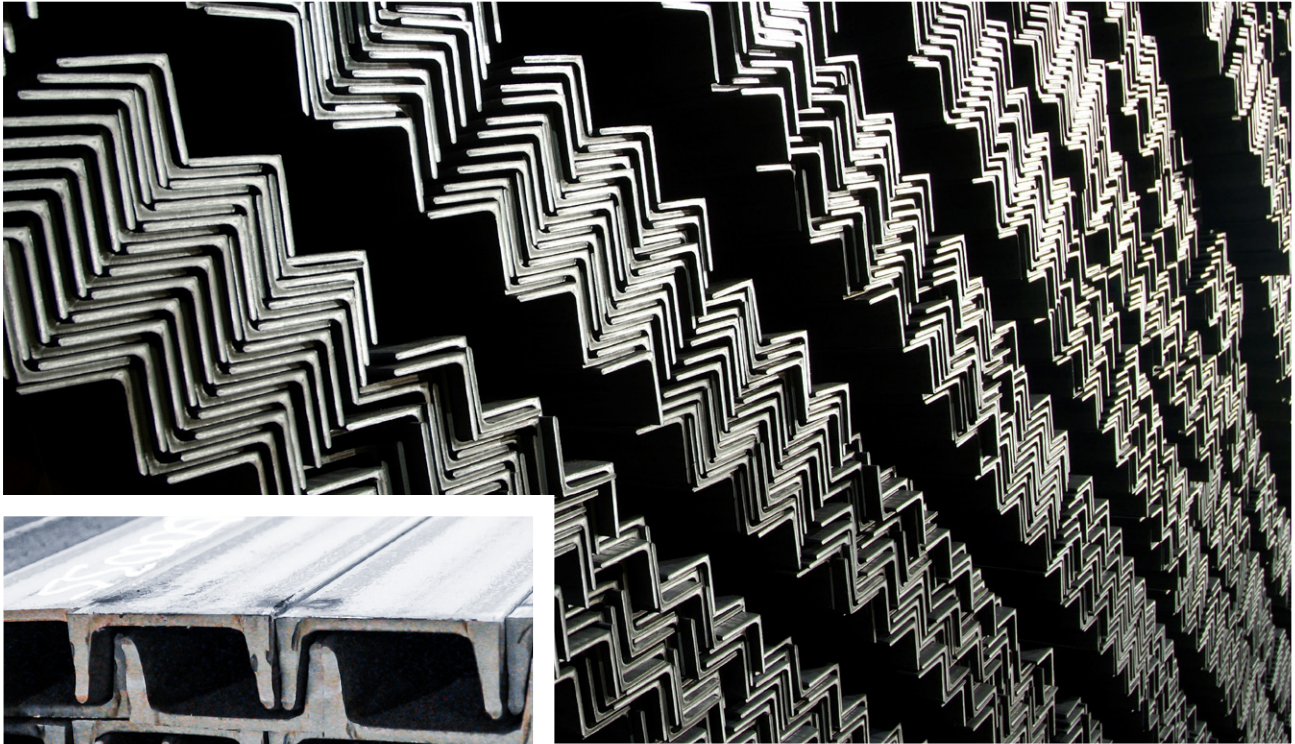
ENERGY



INFRASTRUCTURE



DISTRIBUTION



Founded in 1955, our state-of-the-art mini mill melts scrap steel in electric furnaces to be cast into bar and billets and rolled into merchant products consisting of angles, plain rounds, flats, and channels for service centers, fabricators, and equipment manufacturers.

PRODUCTS

**CHANNEL
SECTIONS
ANGLES**

**FLAT BARS
ROUNDS**

**REBAR
SQUARES**



ENGINEERED BAR DIVISION



PITTSBORO, IN

LOCATION OVERVIEW

Our Engineered Bar Products Division produces a broad range of engineered special bar quality (SBQ), merchant bar quality (MBQ), and other engineered round steel bars for the automotive, heavy truck, agriculture, construction, energy, and industrial manufacturing markets. We also have a bar finishing facility that provides various downstream finishing operations for SBQ steel bars, including turning, polishing, straightening, chamfering, precision saw-cutting, and heat-treating capabilities, to reduce customer processing times, improve yields, and streamline production.

END MARKETS



AUTOMOTIVE



COMMERCIAL TRUCK



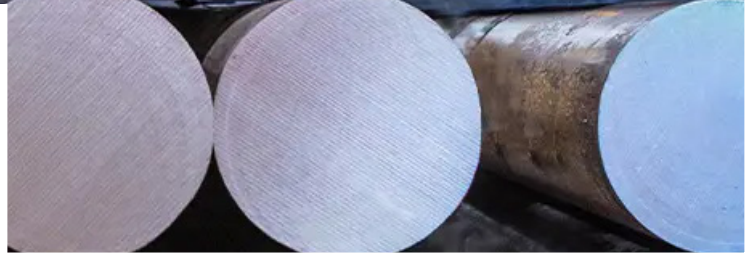
MINING



ENERGY



HEAVY EQUIPMENT



We supply OEMs both directly and indirectly through a trusted network of partners, including forging houses, service centers, cold-finishing processors, and other channel partners. Supported by rigorous quality standards, advanced metallurgical practices, and disciplined process controls from melt through finish, our products deliver reliability, performance, and repeatability.

PRODUCTS

ENGINEERED SPECIAL BAR
QUALITY (SBQ) AND MERCHANT
BAR QUALITY (MBQ)

.875"-9" ROUNDS AND ROUND-
CORNERSQUARE BARS

VARIOUS DOWNSTREAM
FINISHING OPERATIONS
FOR SBQ STEEL BARS

CARBON, ALLOY, AND SPECIALTY STEELS:
ULTRA-CLEAN, BEARING-QUALITY, RE-
SULFURIZED, VANADIUM MICRO ALLOYS,
BORON-TREATED, AND CONTROLLED
HARDENABILITY GRADES-DI



STEEL OF WEST VIRGINIA

HUNTINGTON, WV

LOCATION OVERVIEW

Steel of West Virginia products are sold directly from the mill or as fabricated parts for OEM markets, such as truck trailer, industrial truck, and solar. We have fabrication lines in Huntington, WV, and downstream operations. Both Marshall Steel and Steel Ventures provide value-added services for these markets. Marshall Steel offers value-added services for the truck trailer and solar markets, including sawing, punching, welding, and coating. Marshall is strategically located in Memphis, TN, to help us logistically get product into the Southwest and Mexico markets. Steel Ventures, located in Wurtland, KY, also performs the same type of work for those markets, while also offering hot dip galvanizing as an option. The Kentucky rolling mill works with the Huntington rolling mills to combine products for similar industries, allowing customers to keep minimum inventory levels.

END MARKETS



INDUSTRIAL TRUCK



TRUCK TRAILER



SOLAR FARMS



BRIDGE CONSTRUCTION



HIGHWAY CONSTRUCTION



WAREHOUSING RACKS



COLD FINISH



WEAR BARS



BLADES



RAIL



DISTRIBUTION

STEEL OF WEST VIRGINIA



SWVA

Our Steel of West Virginia operations produce a wide array of special sections and merchant bar products. We frequently perform value-added and finishing operations on those products, such as cutting to length, additional straightening, hole punching, shot blasting, welding, galvanizing, and coating. Through this range of products and others, we create custom-finished products that are generally placed directly into our customers' assembly operations.

TRUCK TRAILER CROSS MEMBERS

INDUSTRIAL TRUCK SECTIONS

PARALLEL FLANGE BEAMS (4" - 8")

S-BEAMS

STANDARD CHANNELS

MISCELLANEOUS CHANNELS (3" - 8")



KENTUCKY

SWVA Kentucky LLC produces an extensive range of flat bars serving diverse markets, including cold finish, OEM, distribution, and other fabricating end users. With a broad spectrum of chemistries and the largest flat bar offering produced from a single facility, the operation is a critical supplier across multiple industries.

FLAT BARS (2" - 12" WIDTH
AND 1/4" - 4" THICK)



STEEL VENTURES INC.

Steel Ventures Inc. (SVI) is a comprehensive source of wide flange beams for the solar market. As a turnkey provider, SVI delivers value-added services such as cut-to-length processing, tracker pattern fabrication, and hot dip galvanizing. The company also supports OEMs, fabricators, and distributors with a broad range of general fabrication services and outside galvanizing solutions.

SOLAR PILES

GENERAL GALVANIZING



MARSHALL STEEL

Located in Memphis, TN, Marshall Steel is a strategic downstream operation supporting SWVA's service to the truck trailer and solar markets. Its value-added capabilities include sawing, hole punching, shot blasting, welding, and protective coating.

TRUCK TRAILER CROSS MEMBERS

SOLAR PILES

WEAR BAR

PRODUCTS

SPECIALTY BAR
PRODUCTS

CUSTOM INDUSTRY
AND END-USER-SPECIFIC
HOT ROLLED SECTIONS
AND SHAPES

GALVANIZING

FABRICATION AND FINISHING

CUT-TO-LENGTH

ADDITIONAL STRAIGHTENING

HOLE PUNCHING

SHOT BLASTING

WELDING

COATING

CUSTOM-FINISHED
PRODUCTS

PLACED DIRECTLY INTO
CUSTOMERS' ASSEMBLY
OPERATIONS



VULCAN STEEL PRODUCTS

PELHAM, AL

LOCATION OVERVIEW

Vulcan Steel Products specializes in threaded rod, cold-drawn, and premium heat-treated bar products, delivering tight tolerances, dependable lead times, and responsive service. Production is located in Pelham, AL, with distribution warehouses across the country to ensure quick, convenient availability of threaded products. Vulcan partners with fabricators, distributors, and OEMs across construction, industrial, infrastructure, and energy markets.



END MARKETS

Petrochemical
Residential construction
Commercial construction
Fire suppression
Renewable energy
Industrial equipment/heavy truck
Telecommunications
Automotive

PRODUCTS

Threaded rod
Threaded studs
Cold drawn rounds and shapes
Heat-treated bar and threaded bar
Engineered tie-down systems

VALUE-ADDED SERVICE

Saw cutting
Keyway cutting
Bar chamfering
Stamping
Coating
Specialized packaging
Strategic warehouse distribution



SDI LAFARGA COPPERWORKS™

NEW HAVEN, IN

LOCATION OVERVIEW

Our COPPERWORKS division provides copper product solutions for a variety of demanding applications. COPPERWORKS is the only North American copper manufacturer to offer high-performance Infinity™ copper, which is produced using 100% recycled content. COPPERWORKS also offers Advantage™ and Elemental™ copper products, spanning the spectrum of value and performance. All copper products meet or exceed ASTM B49 and may be purchased in either Infinity, Advantage, or Elemental brands.



END MARKETS

- Construction
- Transportation
- Energy
- Infrastructure
- Chemicals

PRODUCTS

- Copper rod
- Single-end copper wire
- Can welding wire
- Copper cutz



LOCATIONS

Steel Dynamics Structural and Rail Division

2601 S. County Road 700 E
Columbia City, IN 46725

Main: 866-740-8700
Fax: 260-625-8770

Steel Dynamics Engineered Bar Products Division

8000 N. County Road 225 E
Pittsboro, IN 46167

Main: 877-683-2277
Fax: 260-868-8055

SDI LaFarga COPPERWORKS

1640 S. Ryan Road
New Haven, IN 46774

Main: 260-748-6565
Fax: 260-748-6567

Steel Dynamics Roanoke Bar Division

102 Westside Blvd. NW
Roanoke, VA 24017

Main: 800-765-6567
Fax: 540-983-7284

Steel of West Virginia

17th St. and 2nd Ave.
Huntington, WV 25703

Main: 304-696-8200
Fax: 304-529-1479

Marshall Steel

1555 Harbor Ave.
Memphis, TN 38113

Main: 901-946-1124
Fax: 901-946-5676

Steel Ventures

19 Wurtland Ave.
Wurtland, KY 41144

Main: 606-834-8800

SWVA Kentucky

2704 S. Big Run Road W
Ashland, KY 41102

Main: 606-929-1200
Fax: 844-445-8953

Vulcan Steel Products

10 Crosscreek Trail
Pelham, AL 35124

Main: 800-633-4726
Fax: 205-620-5150

For more information, visit us at
lpg.steeldynamics.com